

# CONTROL SYSTEM

## ECS+

The new generation of ECS let you control up to three columns per system. It is possible to add more systems by cascade connections. Please contact us for more information.

The system includes several optional accessories such as handsets and digital displays.



## Technical Specification

### Function

Control:	Up to 3 column parallel drive
Speed:	32 mm/second <sup>(A01)</sup> 40 mm/second <sup>(D04)</sup>
Soft start:	Yes
Maximum load:	60 kg / column
Travel range:	0-665 mm
Noise output:	55 db
Product silence:	40 db

### Dimensions & Weight

Control unit:	100 x 90 x 27 mm
Power unit:	152 x 59 x 34 mm
Power cables:	Length 3000 mm (primary side)
Motor cable:	Length 1200 mm

### Standards & Environment

EMC, RoHs2, WEE, CE, Reach
Power Unit: TÜV/GS <sup>(Only applies to A01)</sup>
RoHs2, Reach, EMC, UL962

### Electronic Data Power Unit, A01

Input:	110-240 V
Frequency:	50/60 Hz
Output:	29 V DC
Power Plug:	EU, UK & US

### Electronic Data Power Unit, D04

Input:	110-240 V
Frequency:	50/60 Hz
Output:	25-35 V DC
Power Plug:	EU, UK & US

### Operating Environment

Operating Cycle: 1 minute on, 9 minutes off
Operating Temperature: 15-35 C

### Energy Use

Standby:	0,1 W <sup>(A01)</sup> 0,2 W <sup>(D04)</sup>
Maximum power:	240 W <sup>(A01)</sup> 320 W <sup>(D04)</sup>

### Options

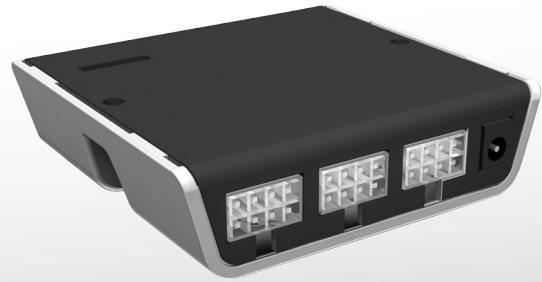
N/A

# CONTROL SYSTEM

## ECS+

The new generation of ECS let you control up to three columns per system. It is possible to add more systems by cascade connections. Please contact us for more information.

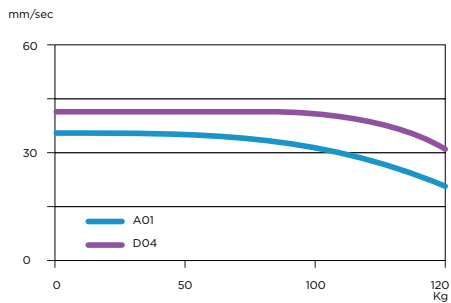
The system includes several optional accessories such as handsets and digital displays.



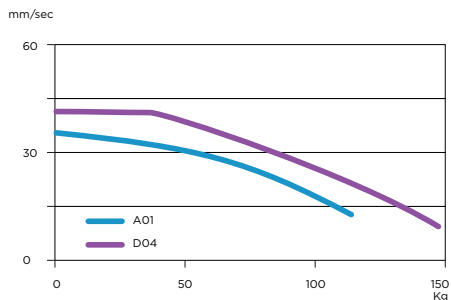
### Speed relative to load.

This is measured with 230 V supply. A small variation on speed is visible with 120V supply. The speed may vary +-5% from measured values below. Measured speed during upwards movement on second run. Tests made on columns with SDA spindle:

#### 2 columns



#### 3 columns



## Features

- » Up to 3 column parallel drive.
- » Up to 5 memory positions (depending on handset)
- » Collision detection, with automatic back-off.
- » Soft drive comfort.
- » Auto detection of connected columns.
- » Dynamic overheat protection.
- » Integrated over load protection.
- » TripIT log function.
- » SimpleMemory (change min and max position of your system in a simple way)
- » Additional equipment is available and connectable to the integrated BUS. system
- » High efficient switch mode power supply (LLC).
- » Separated/safety extra-low voltage (SELV) power source.
- » Low standby power consumption.
- » Universal power supply, input voltage 110V-240V.